

THE ANIMALS' KINGDOM



Darba lapas veidoja Evija Kaša
Augusts, 2023

WILD ANIMALS



WILD ANIMALS



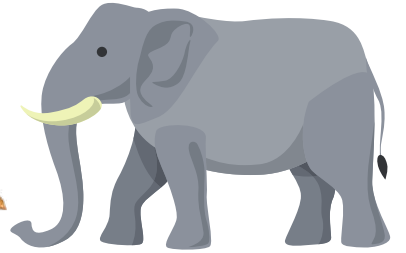
GIRAFFE



TIGER



LION



ELEPHANT



BEAR



RHINO



KOALA



SNAKE



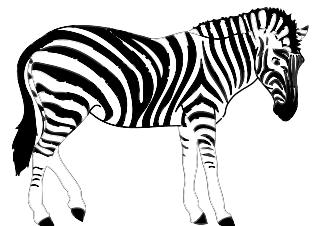
GORILLA



MONKEY



PANDA



ZEBRA



TORTOISE



RABBIT



SQUIRREL



FOX



WILD ANIMALS

Find the words listed below and **mark** them.

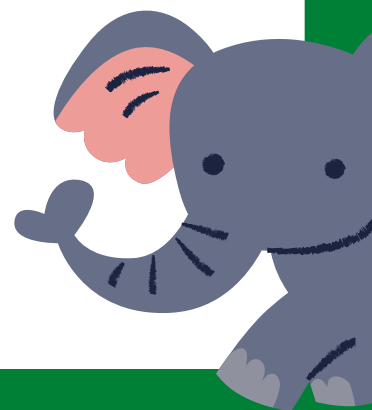
Atrodi vārdus no saraksta. **Iekrāso** tos.

Z	E	B	R	A	B	A	G	C	E	D	I
J	L	E	K	U	M	I	O	E	M	N	G
B	E	A	R	D	B	F	R	G	O	H	I
T	P	A	N	D	A	F	I	C	N	S	R
Z	H	A	S	I	G	Z	L	T	K	N	A
V	A	K	O	A	L	A	L	I	E	A	F
A	N	E	P	O	I	E	A	G	Y	K	F
Y	T	O	R	T	O	I	S	E	I	E	E
E	Q	A	R	U	N	S	A	R	E	T	X

- ELEPHANT
- LION
- TIGER
- GORILLA

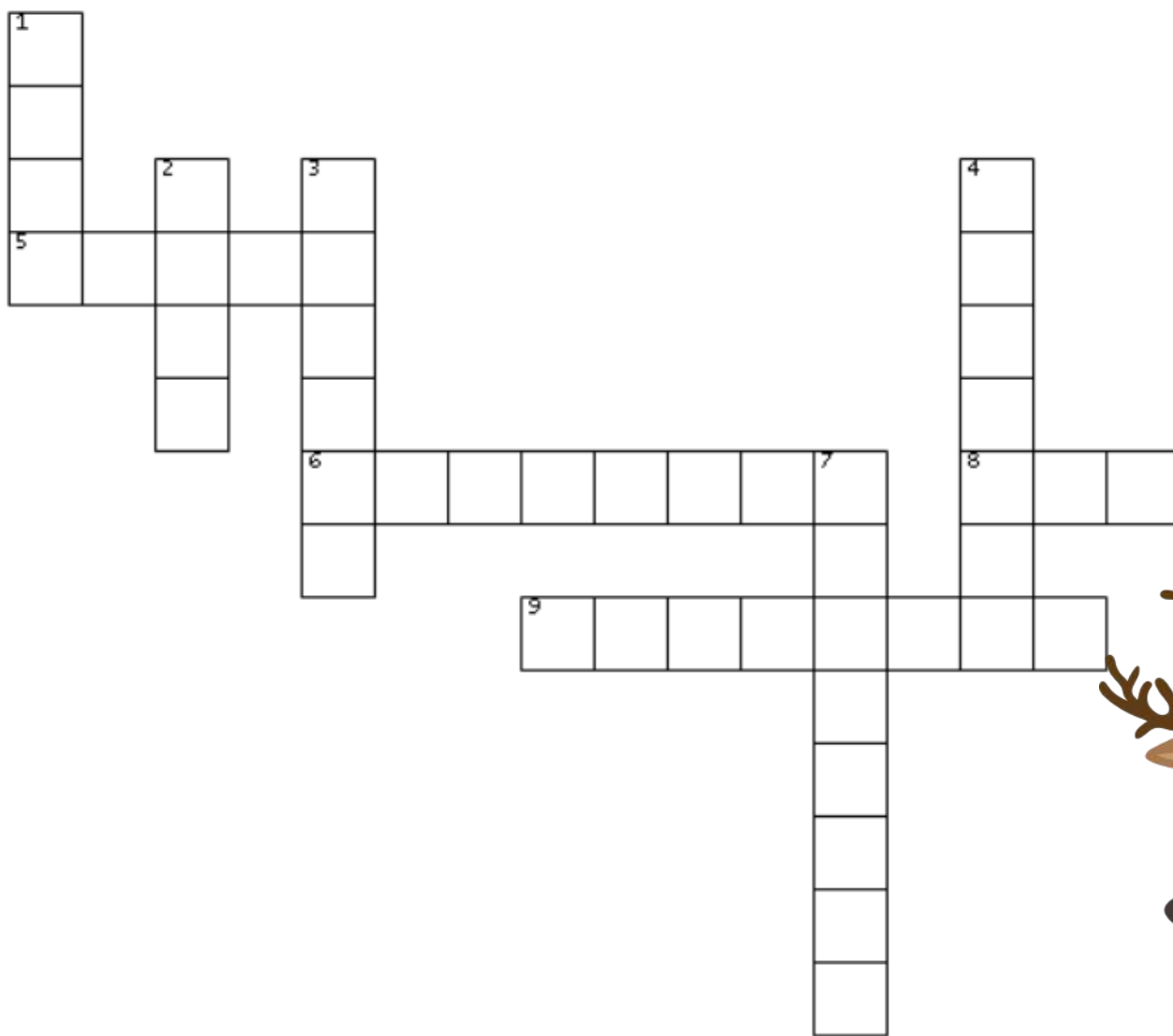
- GIRAFFE
- MONKEY
- PANDA
- ZEBRA

- TORTOISE
- SNAKE
- KOALA
- BEAR



I KNOW WILD ANIMALS!

Fill in the crossword puzzle. **Aizpildi** krustvārdu mīklu.



ACROSS →

- 5. degunradzis
- 6. zilonis
- 8. lapsa
- 9. vāvere

DOWN ↓

- 1. lācis
- 2. lauva
- 3. pērtiķis
- 4. žirafe
- 7. bruņurupucis



WHO IS WHO?

Letters are mixed together. **Decipher** them. Then **match** words with pictures. Burti ir sajukuši. **Atšifrē** tos. Tad **savieno** vārdus ar attēliem.

SOITTEOR

				13			3

LSUERQRI

A horizontal number line with tick marks at every integer from 0 to 10. The numbers 5 and 10 are labeled below the line.

RLOGIA

		4		22	16	21

OMYNEK

20		18		8	

ONIRH

	2	19		

NHEETPAL

--	--	--	--	--	--	--	--

ASEKN

23		6		

AREZB

--	--	--	--	--

RFEFAIG

	15		17	14		

FXO

--	--	--

BTRAI B

1	2	3	4	5

6	7	8

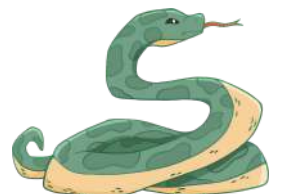
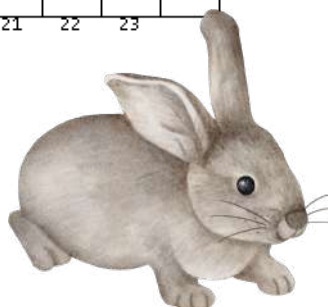
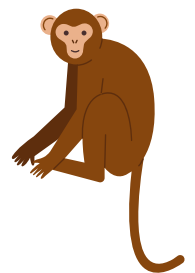
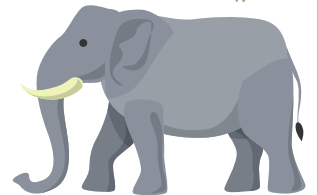
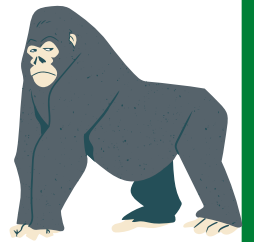
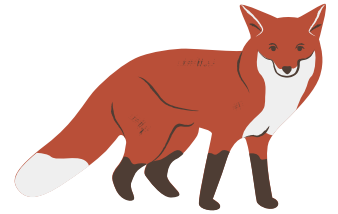
9

10	11	12

13	14

W			D
	15	16	

							!
17	18	19	20	21	22	23	



FACT FILE - WILD ANIMALS

Read facts about wild animals. **Fill in** the missing words. **Izlasī** faktus par savvaļas dzīvniekiem. **Ieraksti** iztrūkstošos vārdus.

weigh / pink / roar / jump / neck

- Elephants are the only animals who can't _____. It is because they are heavy.
- You might be surprised to learn that dolphins can be _____.
- A giraffe has seven bones in its _____, which is the same as a human has, but they are much larger.
- Giant tortoises from the Galápagos Islands can _____ up to 250 kg.
- The lion has the loudest _____ of all the big cats. It can be heard as far as 5km away.



WHO IS WHO?

Read the description of an animal. **Write** the name. Izlasi dzīvnieku aprakstu. **Uzraksti**, kas tas ir.

1. This animal is orange and white. It has four legs and a tail. It eats meat.

2. It is a huge animal. It is grey. It has four legs and a trunk. _____
3. This is a white animal with black stripes. It is similar to a horse. _____
4. This is a funny animal that lives in the jungle. It is usually brown. People say it eats bananas. _____
5. It is a pretty small animal with four legs, a small tail and long ears. _____
6. This animal has got brown spots. It has also got a long neck. It lives in Africa.



ARCTIC FOXES

Read the text. **Circle** the correct answer. **Izlasī** tekstu.

Apvelc pareizo atbildi.

1. Arctic foxes live on the land and sea ice within the Arctic Circle. Winter in the Arctic is different from winter in most other parts of the world. From October to February, the sun never rises. So, it is cold and dark.
2. These small foxes know how to survive in the icy Arctic. Their thick fur keeps the fox's body at a comfortable 104°F. The long, fluffy tail is like a blanket, keeping the fox warm when it wraps the tail around its body to sleep.
3. Arctic foxes prefer to eat small rodents called lemmings, but when times are tough they'll eat anything they can find: insects, and berries. Sometimes an arctic fox will follow a polar bear on a hunt and eat the bear's leftovers.



1.What do arctic foxes eat when times are tough?

- A) Berries
- B) Small rodents
- C) Insects
- D) Anything they can find

2. What do Arctic foxes prefer to eat?

- A) Lemmings
- B) Fish
- C) Birds

3. What animal do Arctic foxes sometimes follow to find food?

- A) seals
- B) polar bears
- C) reindeer

4. Why do Arctic foxes follow polar bears?

- A) to eat the bear's leftovers
- B) to play with the bear
- C) to scare away other animals



PETS



Pets

Write words from the word bank under the correct picture. (**Raksti** vārdus no "vārdu bankas" zem atbilstošā attēla.)



Word Bank

rabbit

parrot

dog

cat

lizard

snake

mouse

gold fish

hamster

guinea pig

tortoise

chameleon



Fun Facts

Read facts about different pets. **Fill in** the missing words. **Izlasī** faktus par dažādiem mājas mīluļiem. **Ieraksti** iztrūkstošos vārdus.

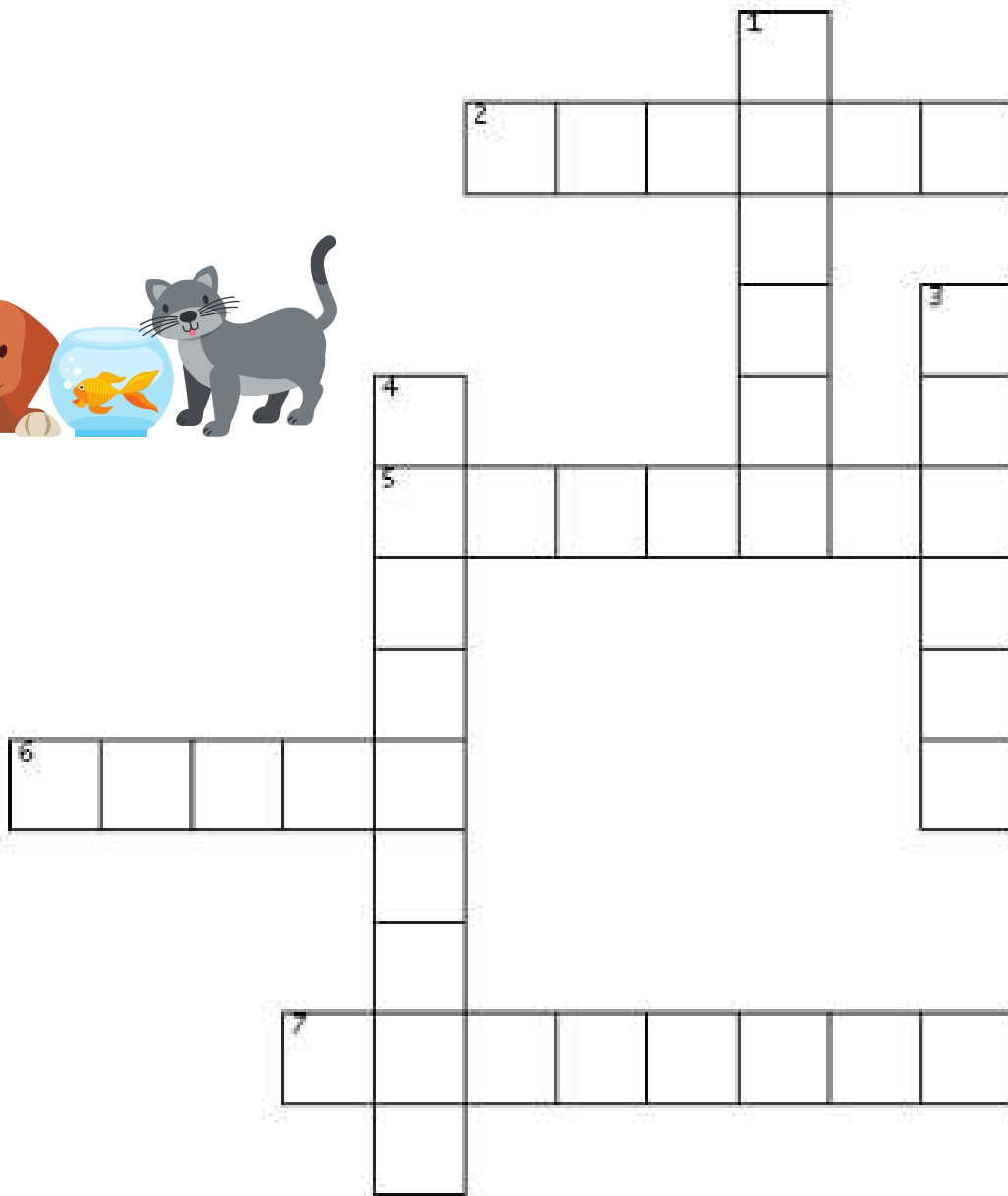
communicate / smell / oldest / popular / seconds

1. Dogs have got a REALLY good sense of _____. It is 40 times better than ours! That makes them brilliant police dogs as they can sniff out clues better than we can!
2. Hamsters are one of the most _____ pets, but in Hawaii they are illegal. It is because if they run away, they can destroy plants.
3. Guinea pigs are very clever and use 11 different sounds to _____.
4. Goldfish have really bad memories and can only remember things for three _____.
5. Tortoises can live a very long life. The _____ tortoise is 190. He's called Jonathan!



Pets in our homes

Fill in the crossword puzzle. **Aizpildi** krustvārdu mīklu.



ACROSS

- 2. ķirzaka
- 5. kāmītis
- 6. pele
- 7. bruņurupucis



DOWN

- 1. trusis
- 3. papagailis
- 4. hameleons

Pets in our homes

Letters are mixed together. **Decipher** them. Then **match** words with pictures. Burti ir sajukuši. **Atšifrē** tos. Tad **savieno** vārdus ar attēliem.

EHMOCLEAN

--	--	--	--	--	--	--	--	--

1 3

EIPAIGGUN

--	--	--	--	--	--	--	--	--

2

LDGISFHO

--	--	--	--	--	--	--	--

5 6

AROTRP

--	--	--	--	--	--

7

IALDZR

--	--	--	--	--	--

BTRIBA

--	--	--	--	--	--

4

ODG

--	--	--

ACT

--	--	--

	Y
--	---

1

--	--	--

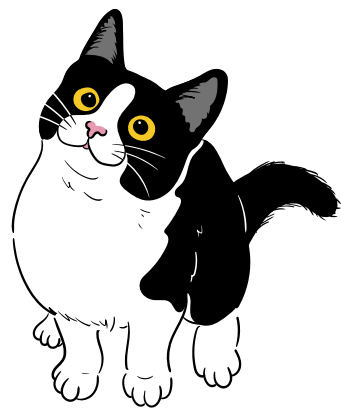
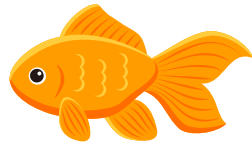
2 3 4

--	--

5 6

--

7



Find me!

Find the words listed below and **mark** them.

Atrodi vārdus no saraksta. **Iekrāso** tos.

C	B	D	R	A	Z	I	L	E	F	Y	O	U	W	M
H	O	U	P	F	L	U	A	S	Y	B	A	X	X	Y
A	Z	K	S	A	T	G	X	U	S	P	H	F	A	B
M	G	I	F	P	R	E	C	O	J	E	J	H	E	Z
E	S	S	Q	E	C	R	K	M	Y	J	K	G	U	G
L	S	K	Z	D	S	B	O	A	W	F	Z	C	Q	K
E	E	T	R	A	B	B	I	T	N	R	G	O	P	E
O	I	I	B	W	V	H	N	G	E	S	C	Z	D	F
N	M	S	L	X	P	S	S	T	X	Q	C	D	O	N
R	M	J	E	Z	K	P	S	D	I	A	D	X	G	K
S	R	W	O	U	K	M	O	Q	T	F	L	P	J	M
B	G	I	H	W	A	T	O	R	T	O	I	S	E	A
E	U	F	H	H	M	O	G	J	C	S	T	E	R	I
D	A	X	V	I	G	G	Z	M	K	O	W	K	C	Y
V	T	N	I	T	U	D	K	E	V	Q	B	F	P	P

cat
hamster
parrot
tortoise

chameleon
lizard
rabbit
dog

mouse
snake

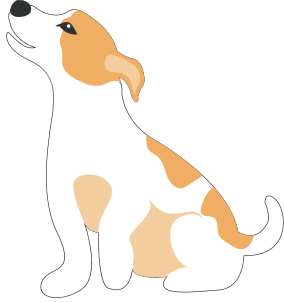
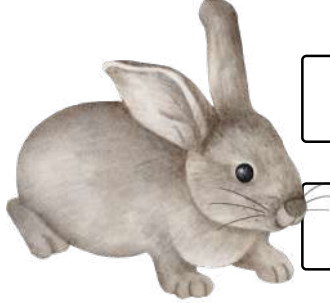







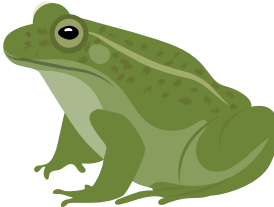


Name: _____

Date: _____

Pets

Look at the pictures and **circle** the correct words. **Apskati** attēlus. **Apvelc** pareizo vārdu.

 <div data-bbox="477 477 753 562">Dog</div> <div data-bbox="477 604 753 689">Cat</div>	 <div data-bbox="1110 477 1386 562">Rabbit</div> <div data-bbox="1110 604 1386 689">Mouse</div>
 <div data-bbox="477 808 753 893">Rabbit</div> <div data-bbox="477 936 753 1021">Cat</div>	 <div data-bbox="1110 808 1386 893">Lizard</div> <div data-bbox="1110 936 1386 1021">Hamster</div>
 <div data-bbox="477 1142 753 1227">Bird</div> <div data-bbox="477 1270 753 1355">Bear</div>	 <div data-bbox="1110 1142 1386 1227">Parrot</div> <div data-bbox="1110 1270 1386 1355">Puppy</div>
 <div data-bbox="477 1478 753 1563">Frog</div> <div data-bbox="477 1606 753 1691">Lizard</div>	 <div data-bbox="1110 1478 1386 1563">Lizard</div> <div data-bbox="1110 1606 1386 1691">Tortoise</div>
 <div data-bbox="477 1812 753 1897">Mouse</div> <div data-bbox="477 1939 753 2024">Fish</div>	 <div data-bbox="1110 1812 1386 1897">Frog</div> <div data-bbox="1110 1939 1386 2024">Snake</div>

SEA ANIMALS



How do you call me in Latvian?

Think how these sea animals are called in Latvian. **Write.**

Use dictionary. **Padomā**, kā šie jūras dzīvnieki tiek nosaukti latviski. **Uzraksti. Izmanto** vārdnīcu.



seahorse



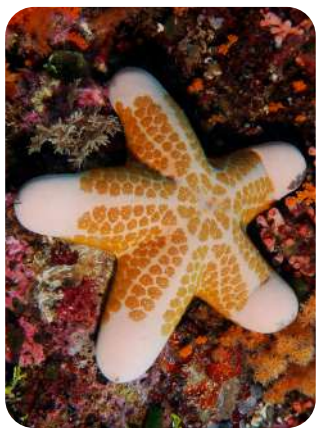
dolphin



clown fish



shark



sea star



seal



sea turtle



dugong



jellyfish



octopus



stingray



clam



prawn



crab



whale



manatee



sea otter



lobster



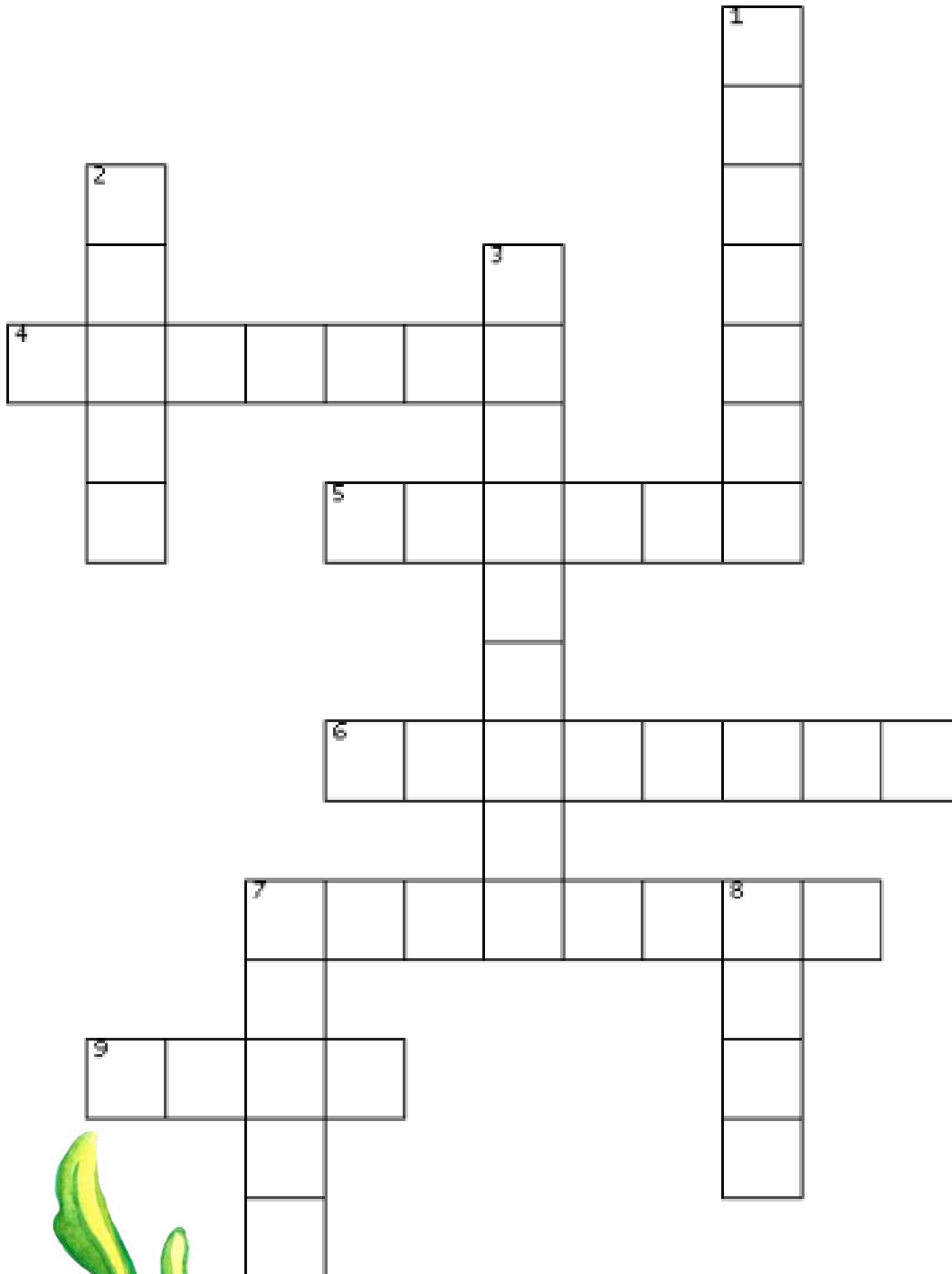
walrus



squid

Under the sea

Fill in the crossword puzzle. **Aizpildi** krustvārdu mīklu.



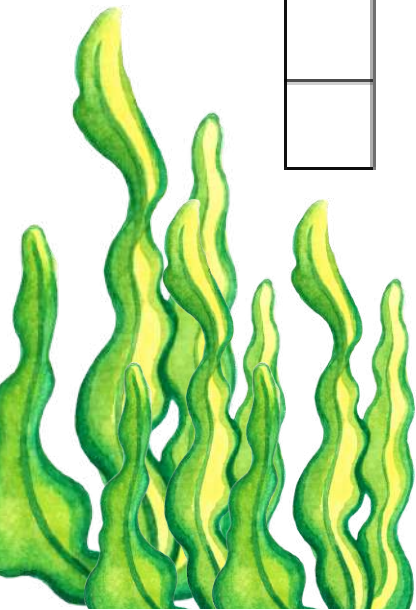
ACROSS

- 4. lamantīns
- 5. valzirgs
- 6. raja
- 7. jūras zirdziņš
- 9. ēdamais gliemezis



DOWN

- 1. astoņkājis
- 2. valis
- 3. medūza
- 7. haizivs
- 8. ronis



MARINE ANIMALS' MYSTERY MESSAGE

Letters are mixed together. **Decipher** them. Then **match** words with pictures. Burti ir sajukuši. **Atšifrē** tos. Tad **savieno** vārdus ar attēliem.

IQSUD

15			4	

ARSWUL

13	14				7

REOLBTS

				1	2	

ARNWP

		8		10

DGGUONO

			6		12	5

RACB

9	11	3	



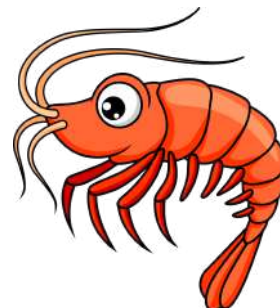
	H	
1		2

3	4	5	6	2	7	1	

M					
8	9	4	10	2	

			M		
11	12	4		13	14

4	15



MARINE ANIMALS



Find the words listed below and mark them.
Atrodi vārdus no saraksta. **Iekrāso** tos.

S L P E W S O G S K O S Q B A
L H K P O D E E L S Q R M C B
H U A L K E E N A D V X K S K
N J T R T Y T E V A T A E W R
L B P A K Z S D F Y V A M M A
S R N R W R D F W D L I M R R
Y A J K O S R W T U R E G R C
M C Q H G S T A U O R O D R B
Y J A S Q U I D J G N W R Z E
V E D O L P H I N O N E W S L
S U P O T C O F Z N M W J B A
N C T Y E X G N O G W Y A Z H
I P E W N B F M J P S U A R W
U S D Y Y Z X L E P M B M Q P
N P U J E I J W C Y D T A L E

- DOLPHIN
- OCTOPUS
- SEAL
- WHALE
- DUOGONG
- PRAWN
- SHARK
- MANATEE
- SEAHORSE
- SQUID



WHO IS WHO?

Read the descriptions. **Guess** what marine animal it is.
Write!
Izlasī aprakstus. **Uzmini**, par kuru no jūras dzīvniekiem
tas ir. **Uzraksti!**

1. Ocean animal with eight arms and bulbous heads.

— — — — —

2. A huge seal-like aquatic animal.

— — — — —

3. The biggest animal in the world.

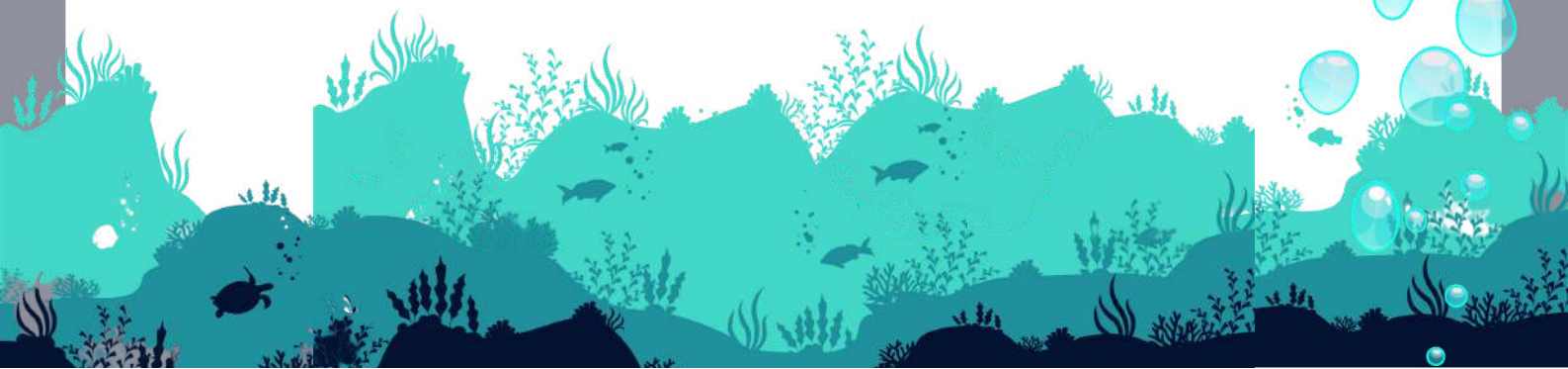
— — — — —

4. An aquatic animal that can be friendly with people.

— — — — —

4. A very dangerous sea animal. It can attack people.

— — — — —



Turtles in trouble

Read the text. Use help-hints for words in bold. **Izlasī** tekstu. Tavs palīgs ir vārdu, kas izcelti treknrakstā, skaidrojums.

Turtles have been swimming in our oceans for at least 110 million years! But sadly, human activities **threaten** turtles all over the world.



What are the threats?

- Turtles can easily become **tangled up** in nets and traps that fisherman set in the sea.
- Turtles use different **habitats**. For example, beaches, but because of tourists, they can lose this habitat.
- Ocean **pollution** is harming turtles and their habitat. Litter such as plastic bags are dangerous to baby turtles who mistake them for food like jellyfish. Turtles can't **digest** plastic and this can harm them and even kill them.

Help-hints

to threaten - apdraudēt

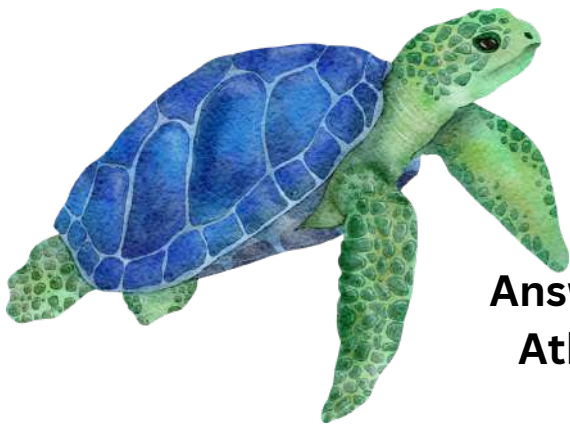
to become tangled up - sapīties (piemēram, tīklā)

a habitat - dzīves vieta

pollution - piesārņojums

to digest - sagremot





Turtles in trouble

Answer the questions. **Circle** the correct answer.
Atbilde uz jautājumiem. **Apvelc** pareizo atbildi.

How long have turtles been swimming in our oceans?

- A) for a few thousand years
- B) at least 110 million years
- C) since the Industrial Revolution
- D) only a couple of centuries

Which habitat can turtles lose because of tourists?

- A) plastic bags
- B) beaches
- C) ocean
- D) nets and traps

What do baby turtles mistake for food?

- A) jellyfish
- B) fish
- C) seaweed
- D) plastic bags

What can turtles easily become tangled up in?

- A) Tourists
- B) Nets and traps
- C) Litter
- D) Plastic bags

What happens to turtles when they ingest plastic?

- A) They lose their habitat
- B) They can be harmed or killed
- C) They become tangled up
- D) They can't digest it

FARM ANIMALS

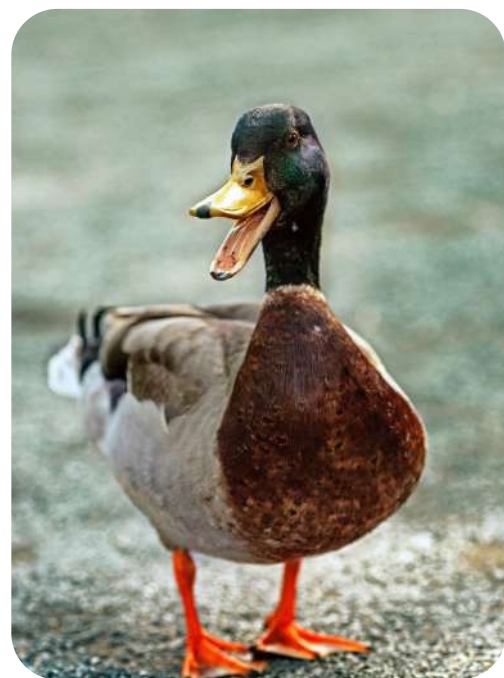


FARM ANIMALS

Write words from the word bank under the correct picture.
(**Raksti** vārdus no "vārdu bankas" zem atbilstošā attēla.)







WORD BANK

goat

pig

horse

chick

rooster

cow

sheep

hen

calf

donkey

lamb

bull

dog

cat

duck

goose

turkey

rabbit





FARM ANIMALS

Find the words listed below and mark them.
Atrodi vārdus no saraksta. **Iekrāso** tos.

S	A	E	I	H	O	U	D	U	C	K	B
H	O	R	S	E	C	D	E	J	H	K	L
E	V	O	Z	N	L	Q	R	S	I	O	M
E	A	Y	I	X	A	T	C	W	C	N	P
P	I	G	A	E	M	D	O	N	K	E	Y
K	L	O	I	J	B	M	W	N	E	R	T
X	Q	A	D	F	G	H	J	I	N	O	U
A	Y	T	U	R	K	E	Y	K	L	M	A
Z	D	E	Y	M	R	A	B	B	I	T	Z

- SHEEP
- COW
- DUCK
- HEN

- HORSE
- DONKEY
- PIG
- CHICKEN

- TURKEY
- GOAT
- LAMB
- RABBIT



I KNOW FARM ANIMALS!

Fill in the crossword puzzle. **Aizpildi** krustvārdu mīklu.



ACROSS

- 1. jērs
- 3. teļš
- 5. ēzelis
- 6. cūka
- 9. trusis
- 10. zirgs

DOWN

- 2. bullis
- 3. cālis
- 4. gailis
- 7. kaza
- 8. aita
- 10. vista

FARM ANIMALS!

Letters are mixed together. **Decipher** them. Then **match** words with pictures. Burti ir sajukuši. **Atšifrē** tos. Tad **savieno** vārdus ar attēliem.

RBITBA

	8			1		

MALB

	5	7	

OSOERTR

						6

EESPH

11				

HSOROE

--	--	--	--	--	--

LFCA

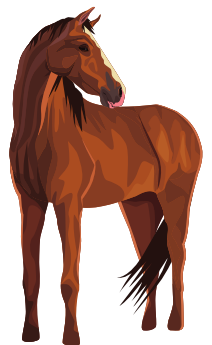
	9	10	4

UTKYER

			2		

SGOEO

	3			

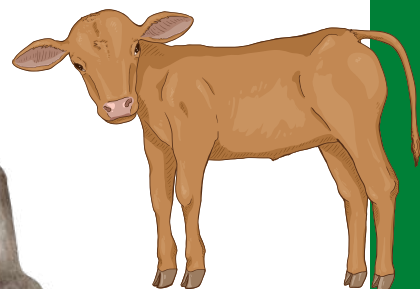
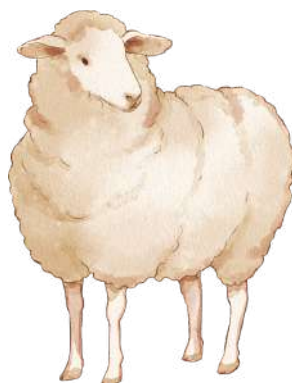
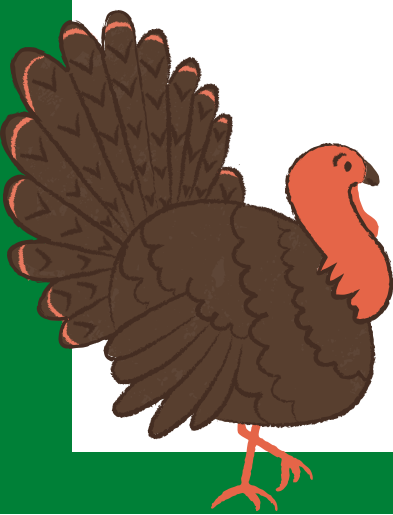


1

	N		W
2		3	

4	5	6	7

	N						.
8		1	7	9	10	11	



DINOSAURS

Past Simple



Dinosaurs

Read the text. **Izlas**i tekstu.

Tyrannosaurus Rex or T.Rex were one of the biggest meat eating dinosaurs. They were not the biggest though. They lived 60 to 70 million years ago.

They had big teeth and could run fast. They could be about 12 meters long! The T.Rex has a large brain for a dinosaur. The largest T.Rex tooth ever found was about 30 centimeters long.



Spinosaurus might have been the biggest meat-eating dinosaurs ever! It was 18 meters long and weighed about 20 tons, almost 4 elephants. They had a long mouth full of teeth and lived in the water and on land -like a crocodile.

They had a big sail on their back. Scientists think they could use this to heat their blood quicker. They also had longer arms than dinosaurs like the T. Rex, so maybe they walked on four legs at some point.



Answer the questions. **Atbildi** uz jautājumiem)

1.How long ago did T. Rex live?

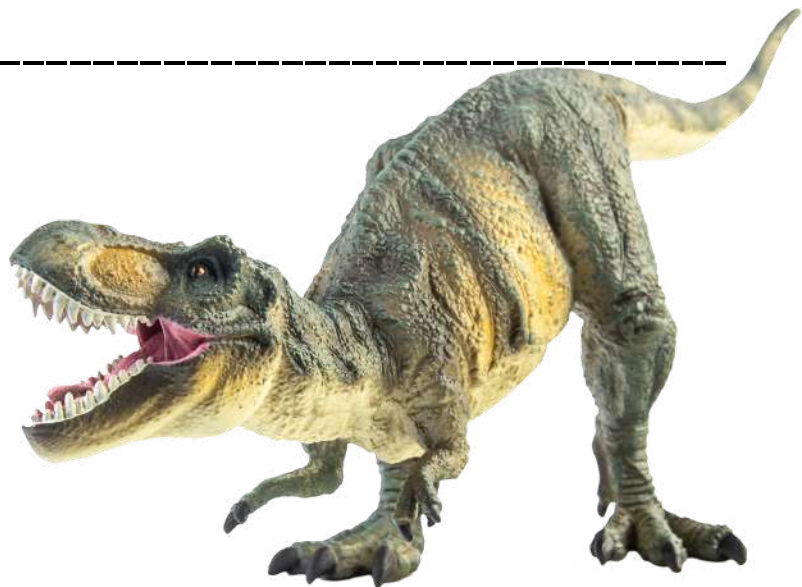
2.How many centimeters is the longest T.Rex tooth?

3.How long was Spinosaurus?

4.What did Spinosaurus have on their back?

5.Was Spinosaurus bigger than T.Rex?

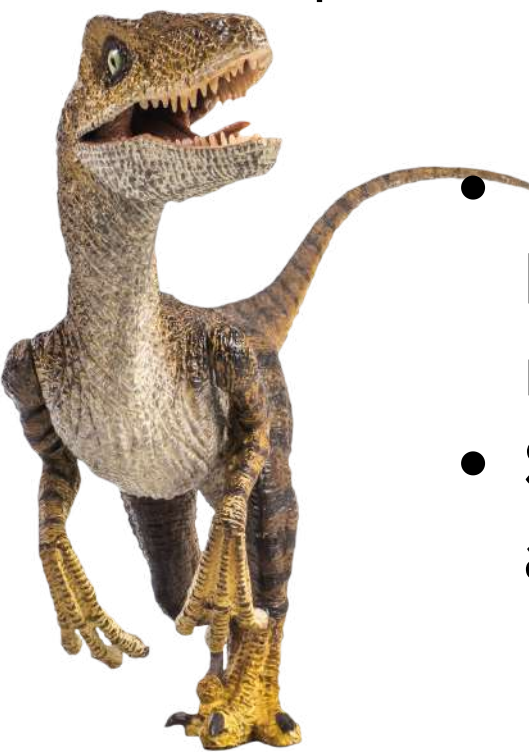
6.Where did Spinosaurus live?



Dinosaurs - Fact File

Read facts about dinosaurs. **Circle** the correct answer.
(**Lasi** faktus par dinozauriem. **Apvelc** pareizo atbildi.)

- Some dinosaurs were smaller than a chicken.
- The word dinosaur comes from Greek, meaning "terrible lizard."
- The largest dinosaur with feathers was the Yutyrannus huali. This cousin of the T-Rex was 30 feet long and had feathers to stay warm.
- Dinosaurs lived all over the world in different places and climates, from dry, sandy deserts to tropical forests.



- People think that dinosaurs were brown, grey or green, but in reality dinosaurs were colourful.
- Some large dinosaurs could live almost 100 years.

Read facts about dinosaurs. **Circle** the correct answer.
(**Lasi** fakts par dinozauriem. **Apvelc** pareizo atbildi.)

1. What does the word dinosaur mean?

- A) small lizard
- B) terrible lizard
- C) bird lizard

2. Which dinosaur was the largest with feathers?

- A) Velociraptor
- B) Yutyrannus huali
- C) T-Rex

3. How long was the Yutyrannus huali?

- A) 30 feet
- B) 20 feet
- C) 10 feet



4. True or False: Dinosaurs were smaller than chickens.

- A) True
- B) False

5. Where did dinosaurs live?

- A) only in tropical forests
- B) all over the world
- C) only in dry, sandy deserts

6. What type of climate did dinosaurs live in?

- A) only dry, sandy deserts
- B) different places and climates
- C) only tropical forests

7. True or False: Dinosaurs lived in tropical forests.

- A) True
- B) False

8. True or False: Dinosaurs were colorful.

- A) False
- B) True



EXTINCT ANIMALS

Past Simple



Read the text about extinct animals. **Fill in** the text with "was" or "were". **Lasi** tekstu par izmirušiem dzīvniekiem. Tukšajās vietās **ieraksti** "was" vai "were".

Extinct Animals

Tasmanian tiger _____ the world's largest meat-eater. It looked like a wolf, but had yellow-brown fur, and stripes on its back. Their tails _____ thick, and long.



Woolly mammoths _____ big. They _____ about the size of a modern African elephant. The woolly mammoth _____ not the only woolly animal. The woolly rhinoceros _____ around at the same time, and they died out around the same time too.

Dodo _____ a bird that could not fly. Dodo birds _____ bigger than a turkey. They _____ blue-grey birds with small wings and a long beak. Its legs _____ small and yellow.

