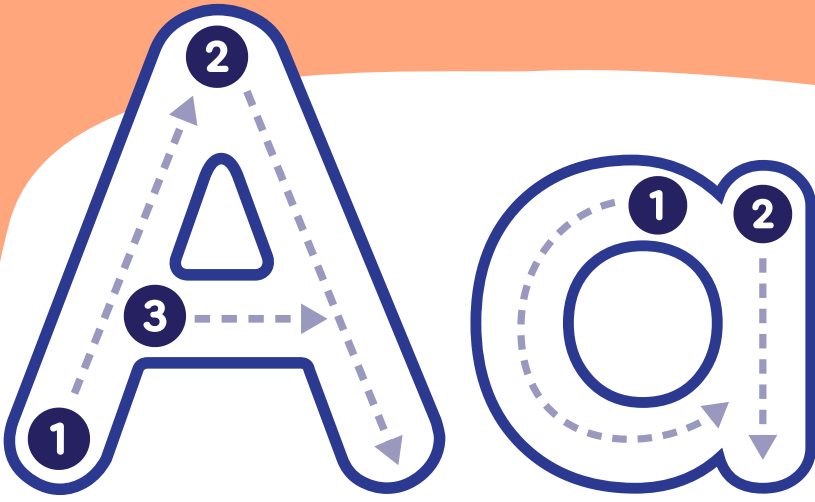
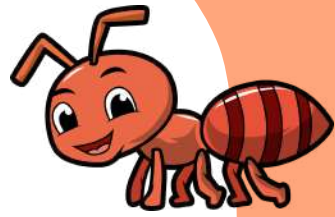




BACK TO SCHOOL

ALPHABET BOOK



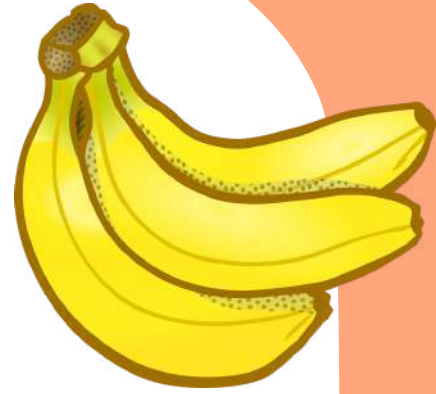
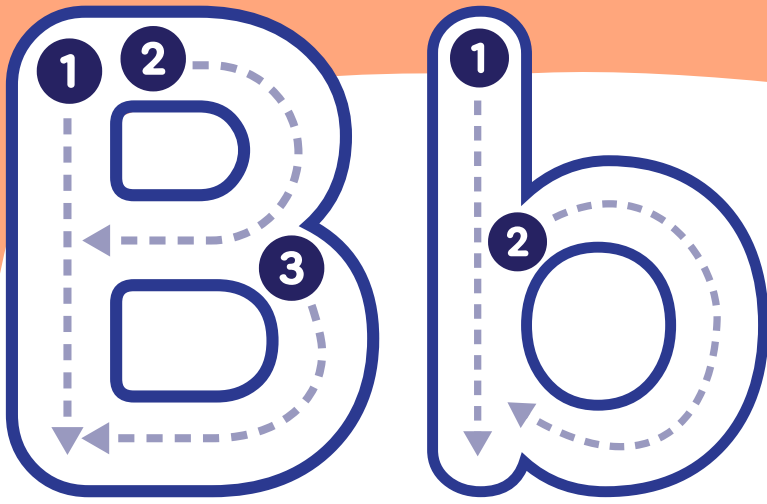


Practise writing.

Aa

Handwriting practice lines consisting of a solid top line, a dashed middle line, and a solid bottom line. The first line contains the letters 'Aa' at the beginning, followed by several blank lines for practice.



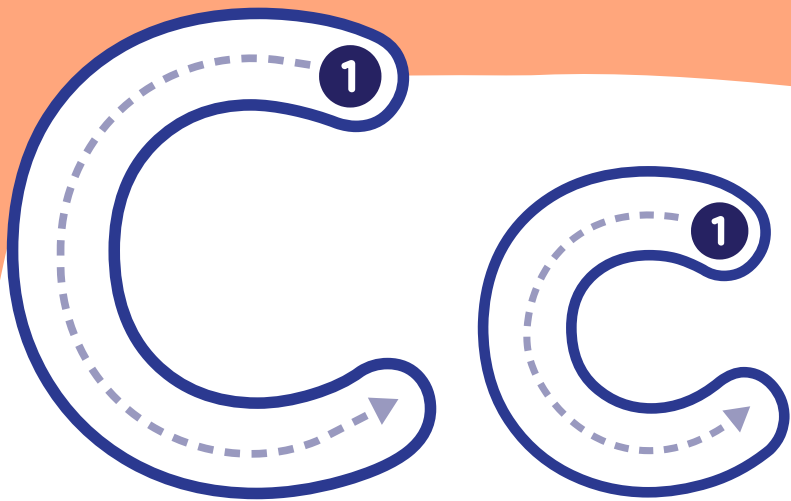


Practise writing.

Bb

Handwriting practice lines consisting of solid top and bottom lines with a dashed middle line. The first line contains the letters 'Bb' at the beginning, followed by several blank lines for practice.

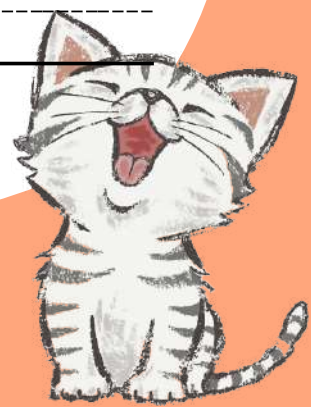


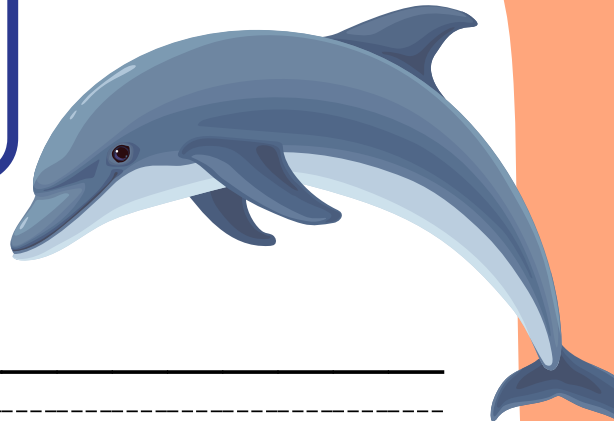
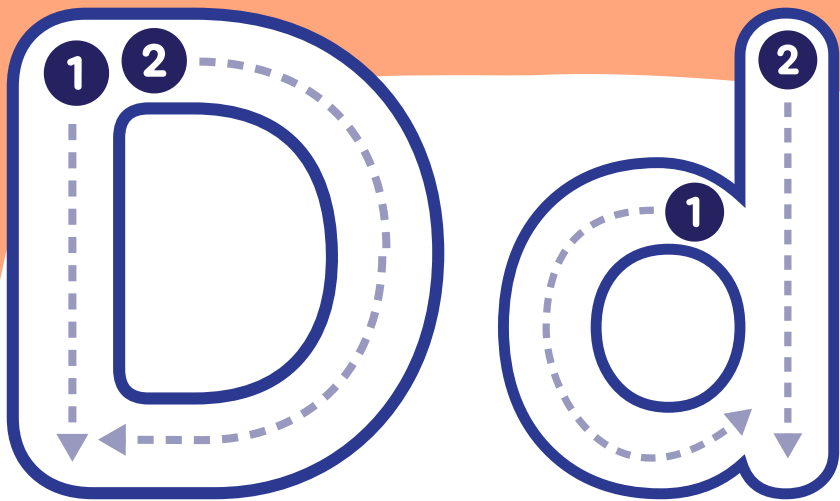


Practise writing.

Cc

Handwriting practice lines consisting of multiple sets of three horizontal lines (top, dashed middle, bottom) for writing practice.

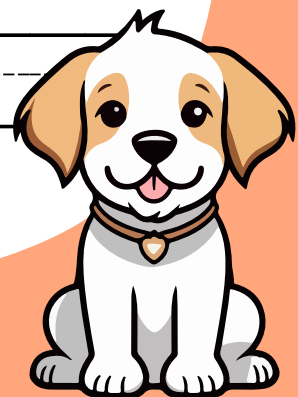


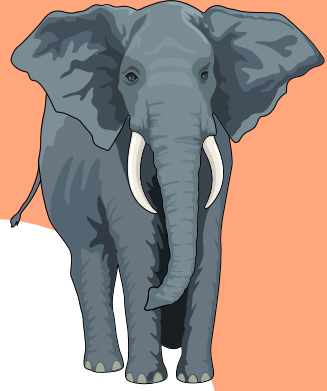
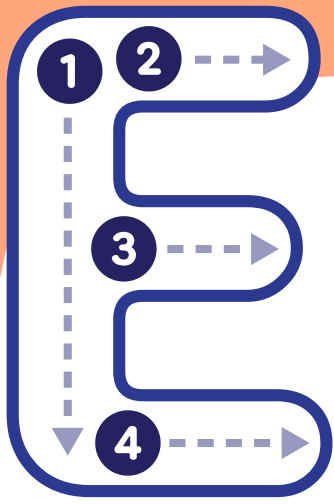


Practise writing.

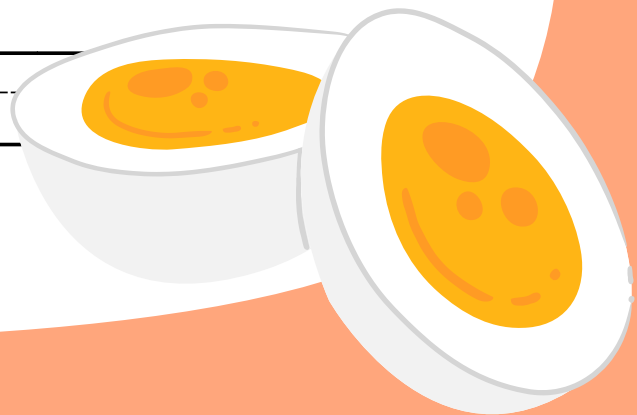
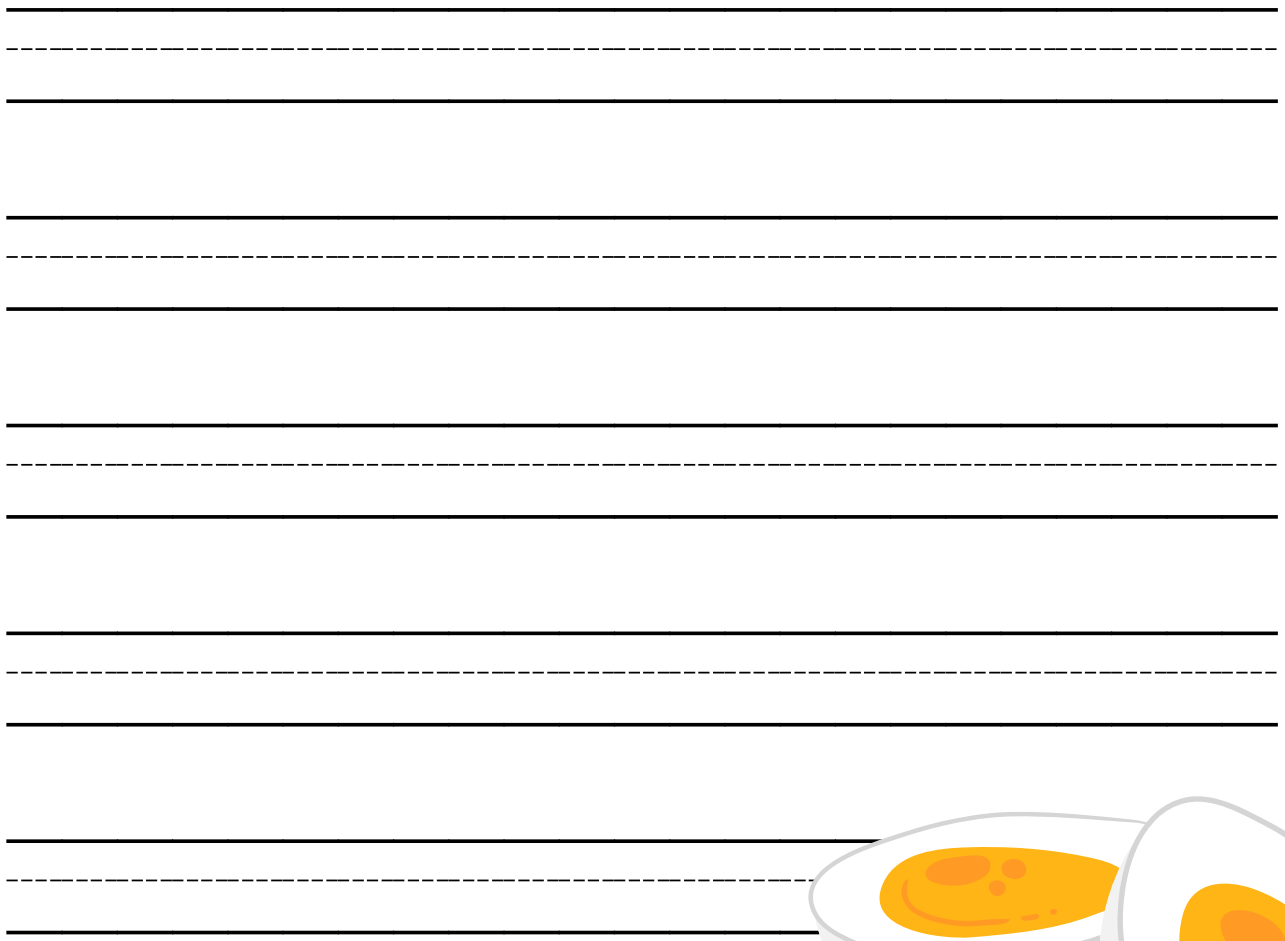
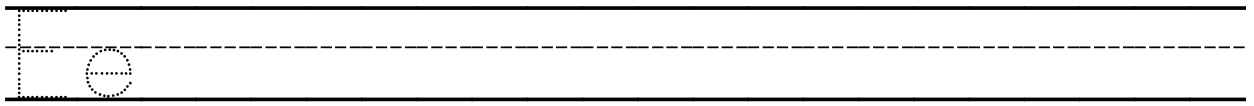
Dd

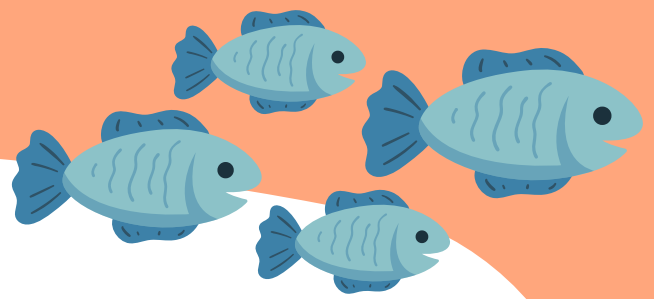
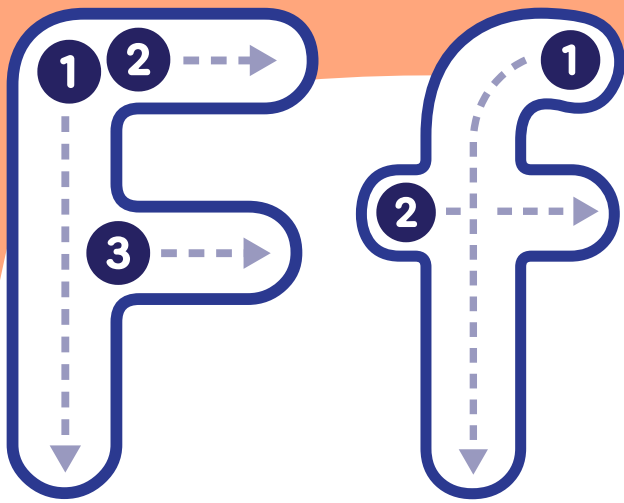
Handwriting practice lines consisting of multiple sets of three horizontal lines (top, middle dashed, bottom) for writing practice.





Practise writing.

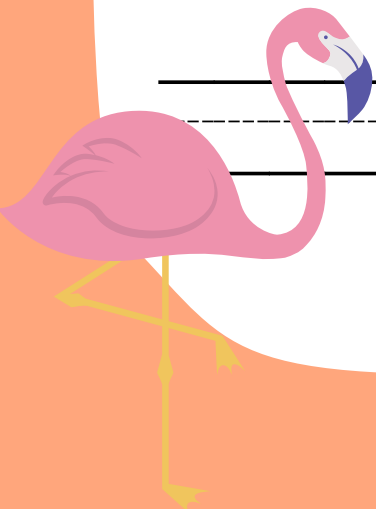


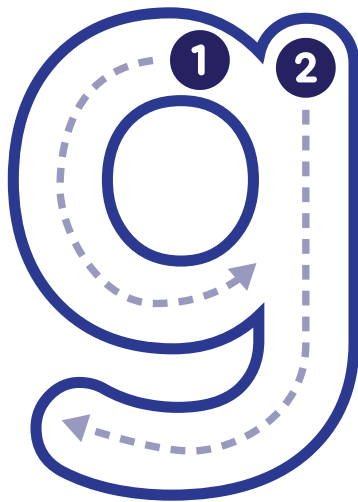
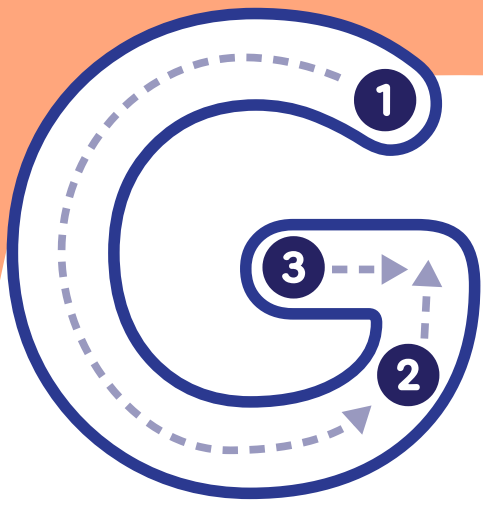


Practise writing.

Ff

Handwriting practice lines consisting of multiple sets of three horizontal lines (top, dashed middle, bottom) for writing practice.

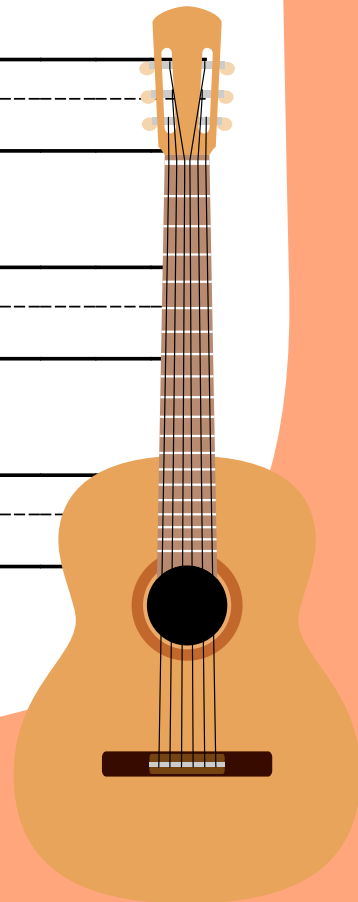


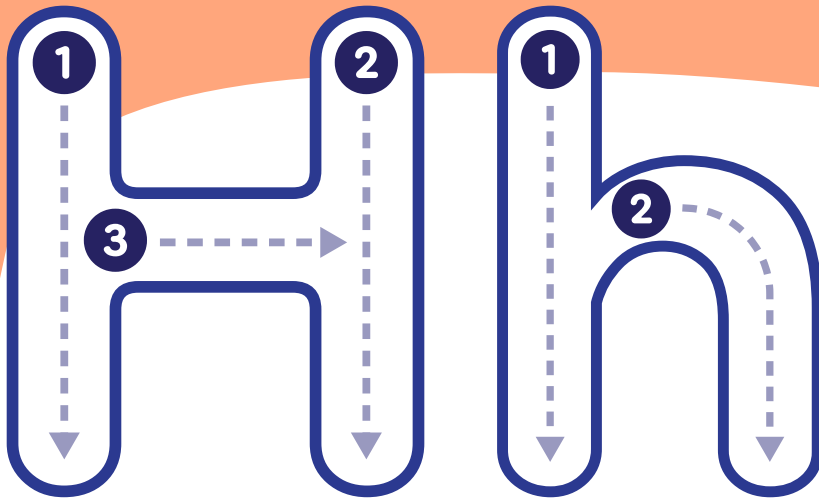


Practise writing.

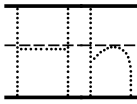


Handwriting practice lines consisting of four sets of horizontal lines (top, dashed middle, bottom) for writing practice.

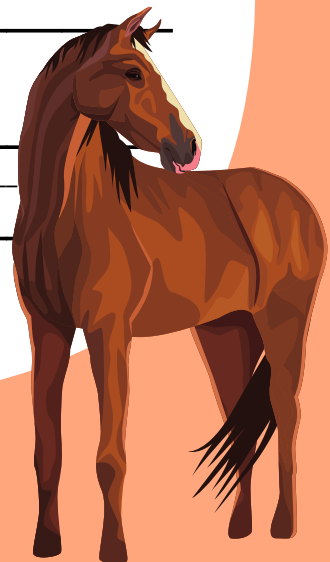


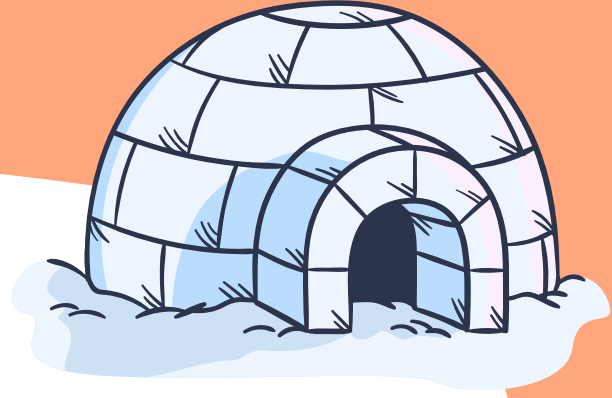
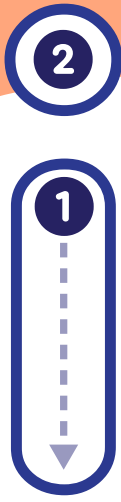
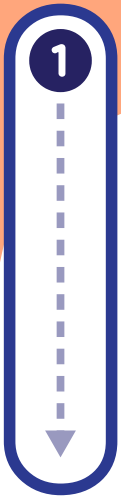


Practise writing.

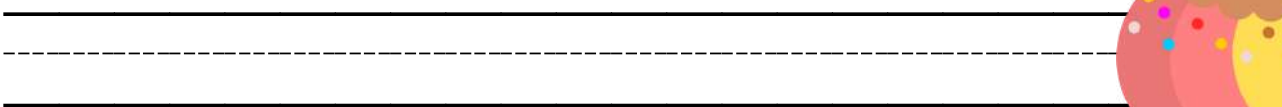
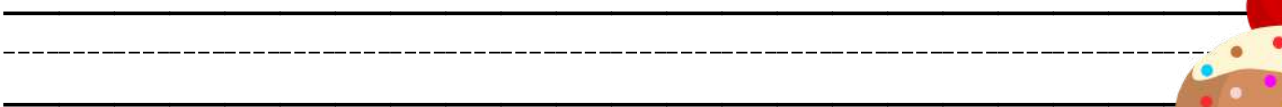
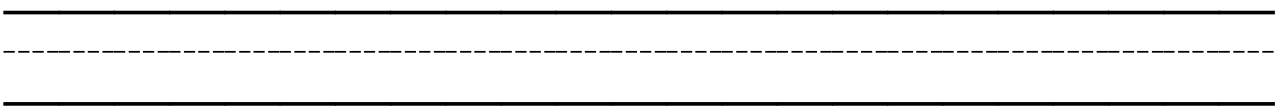
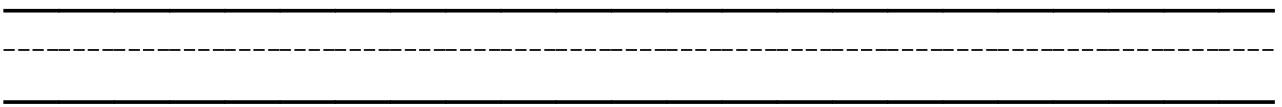
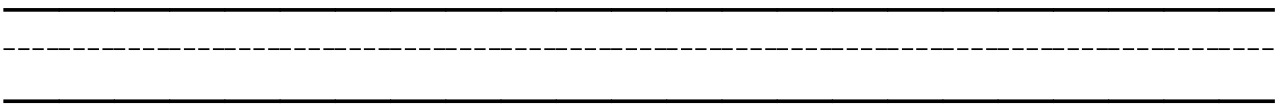


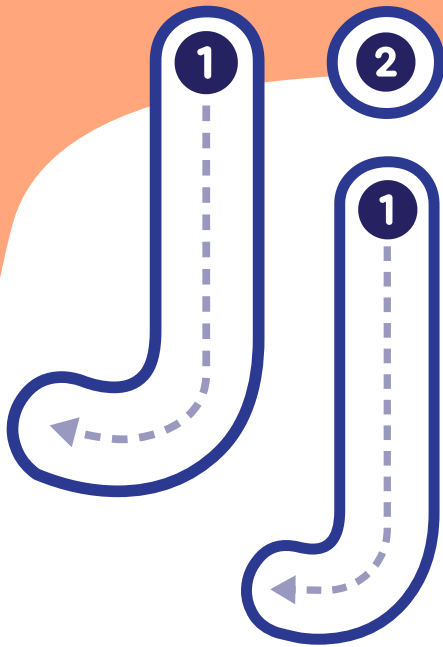
Handwriting practice lines consisting of multiple sets of three horizontal lines (top, middle-dashed, bottom) for writing practice.





Practise writing.

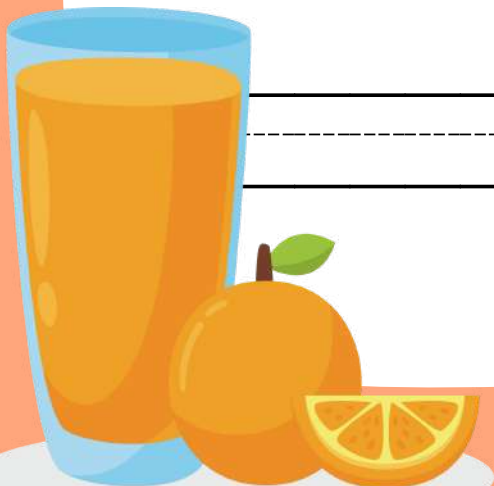


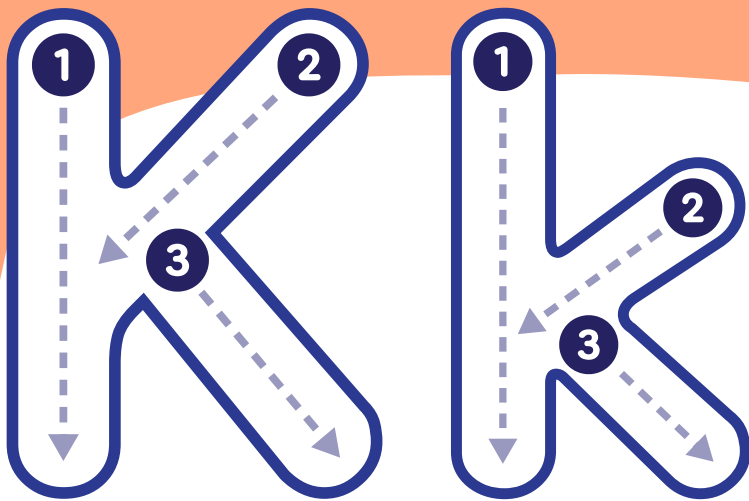


Practise writing.

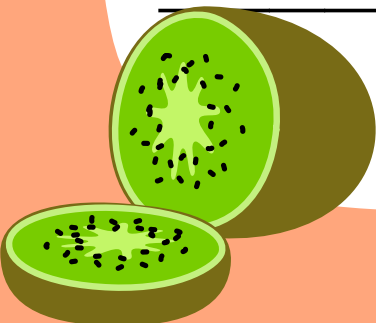
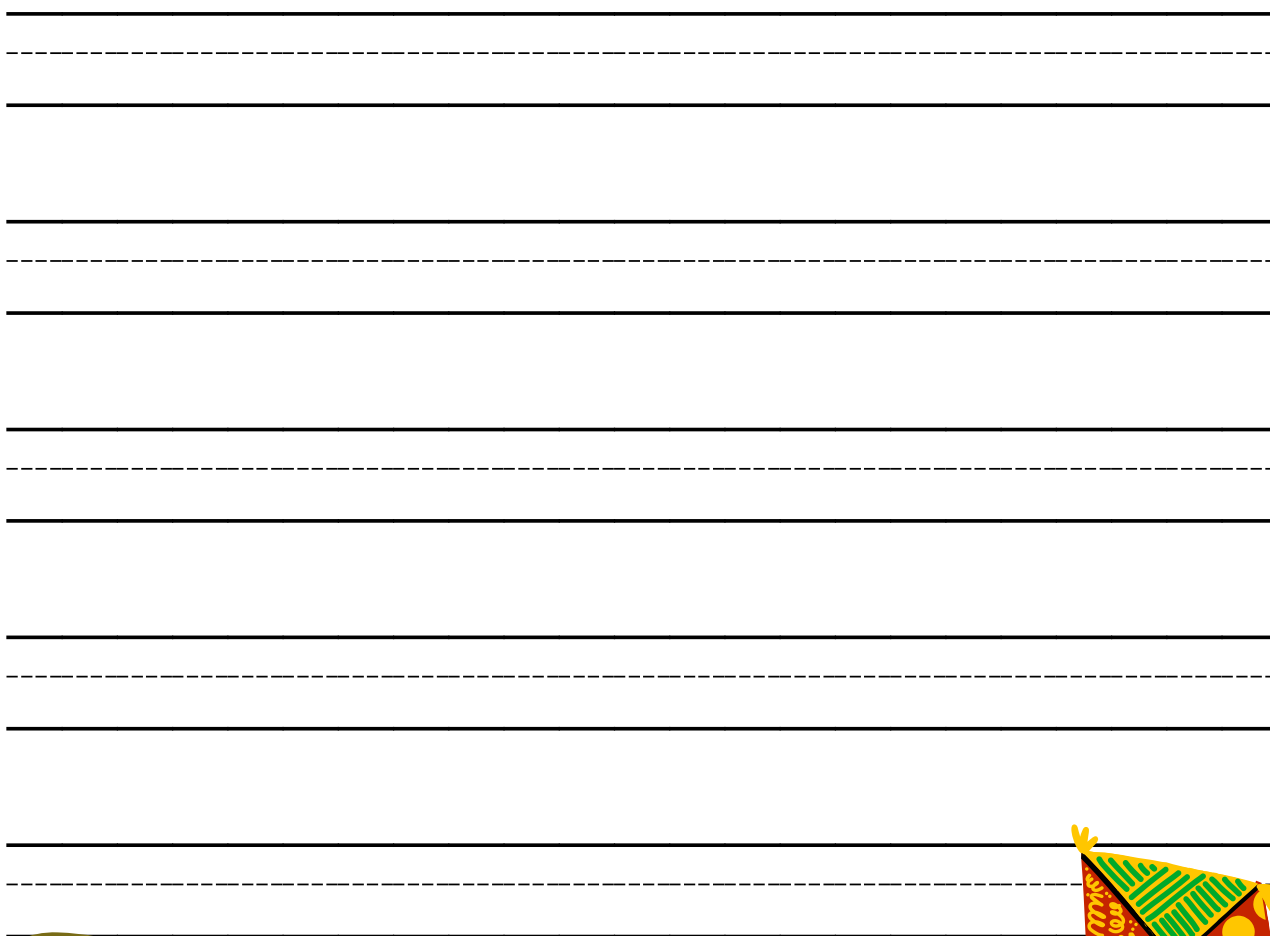
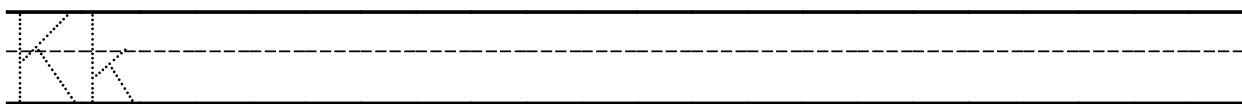
Jj

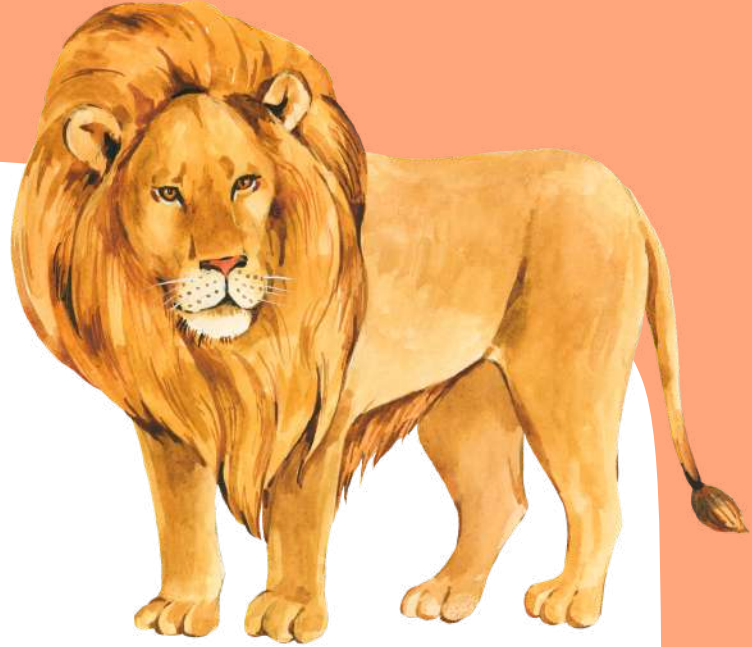
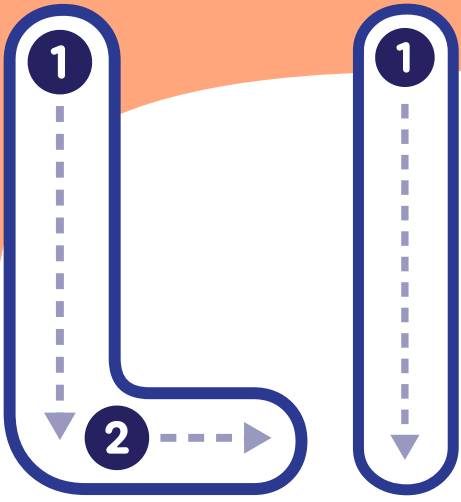
Handwriting practice lines consisting of multiple sets of three horizontal lines (top, middle dashed, bottom) for practicing the letter Jj.





Practise writing.

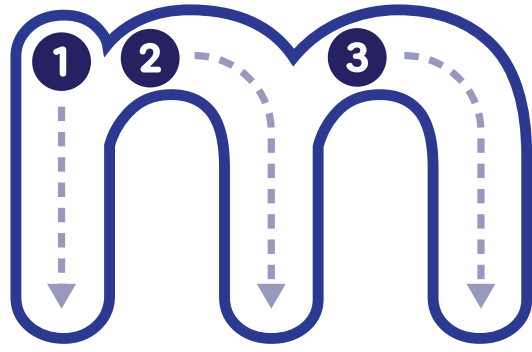
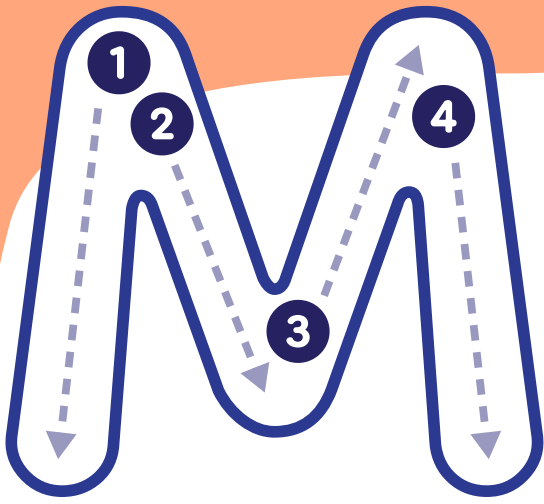




Practise writing.

Handwriting practice lines consisting of multiple sets of three horizontal lines (top, middle dashed, bottom) for writing practice.

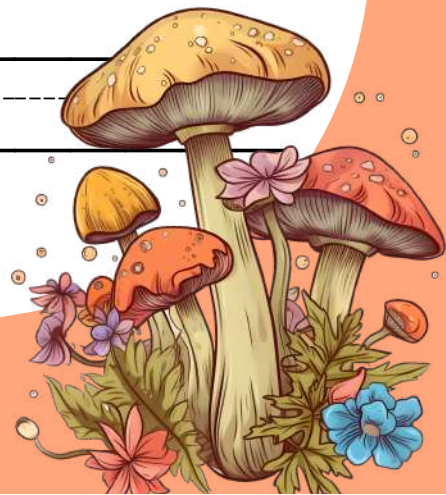


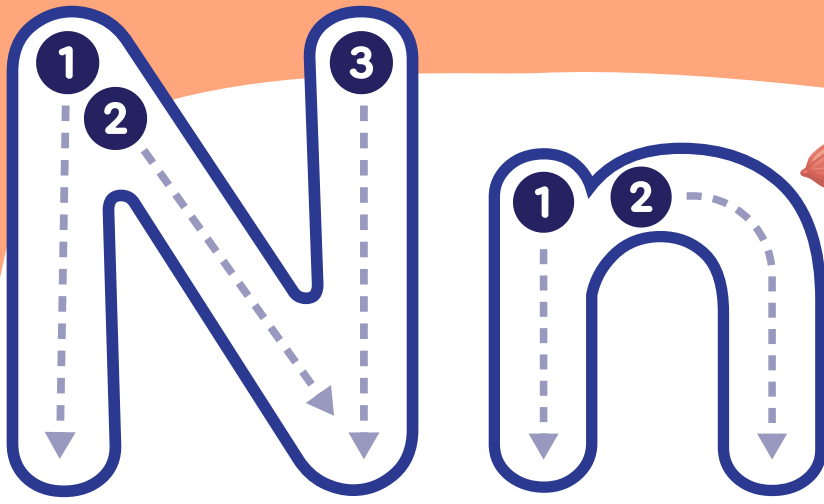


Practise writing.

Mm

Handwriting practice lines consisting of multiple sets of three horizontal lines (top, middle dashed, bottom) for practicing the letter 'M'.



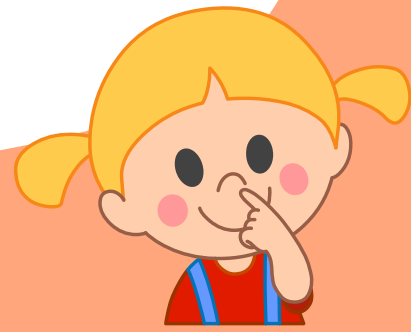


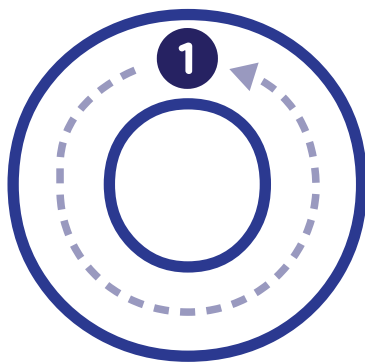
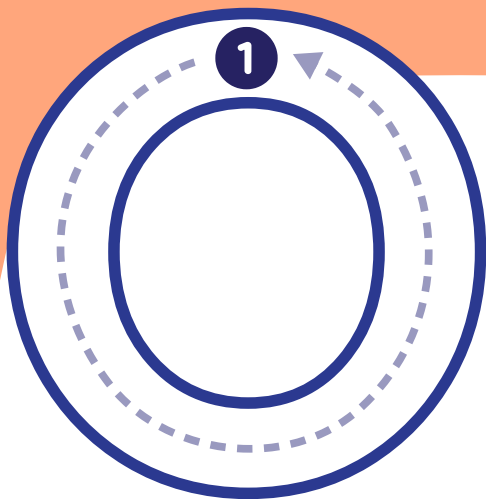
Practise writing.

Nn

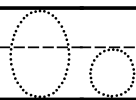
Handwriting practice lines consisting of solid top and bottom lines with a dashed middle line. The first line contains the letters 'Nn' at the beginning. There are four more identical sets of lines below it for practice.

NOSE



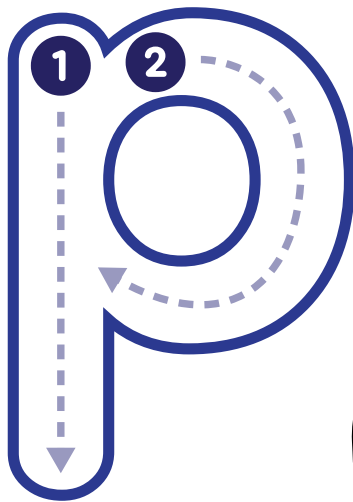


Practise writing.



Handwriting practice lines consisting of multiple sets of three horizontal lines (top, middle dashed, bottom) for practicing writing the letter 'O'.

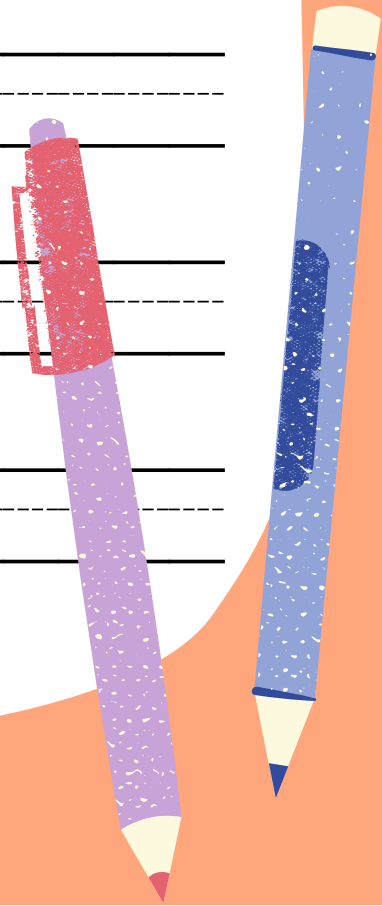


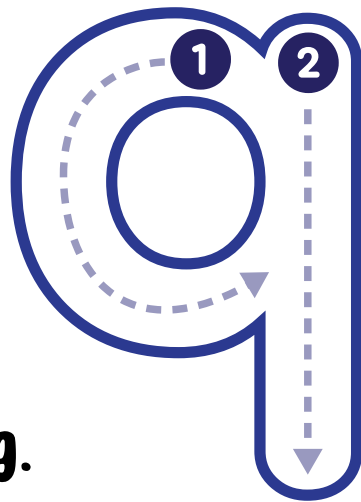
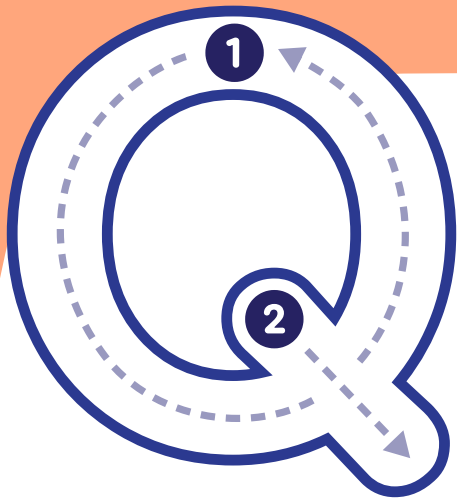


Practise writing.

Pp

Handwriting practice lines consisting of multiple sets of three horizontal lines (top, middle dashed, bottom) for writing practice.



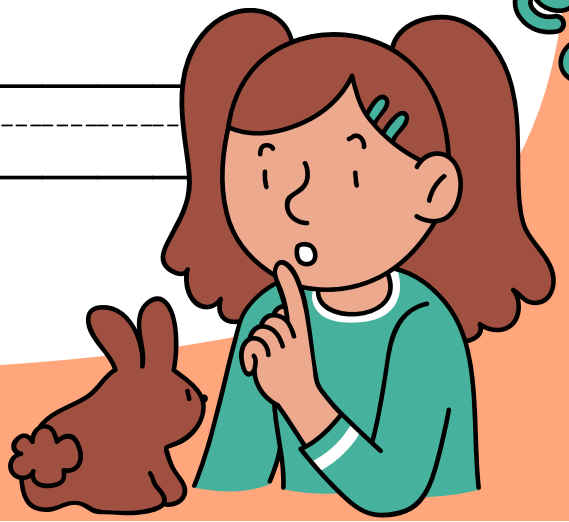


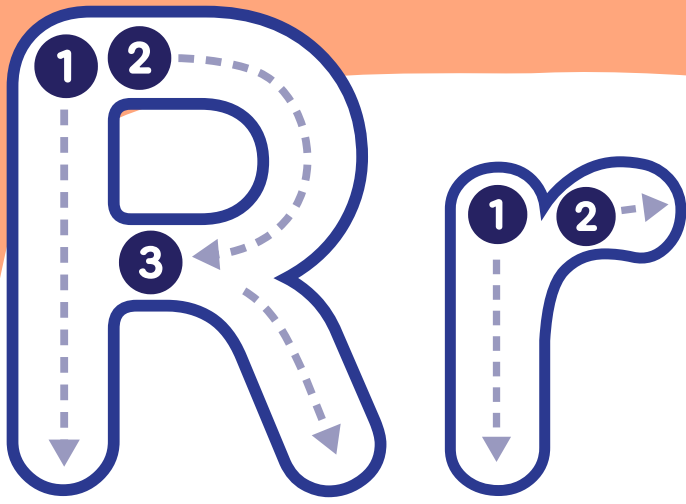
Practise writing.

Qq

Handwriting practice lines consisting of multiple sets of three horizontal lines (top, middle dashed, bottom) for writing practice.

quiet



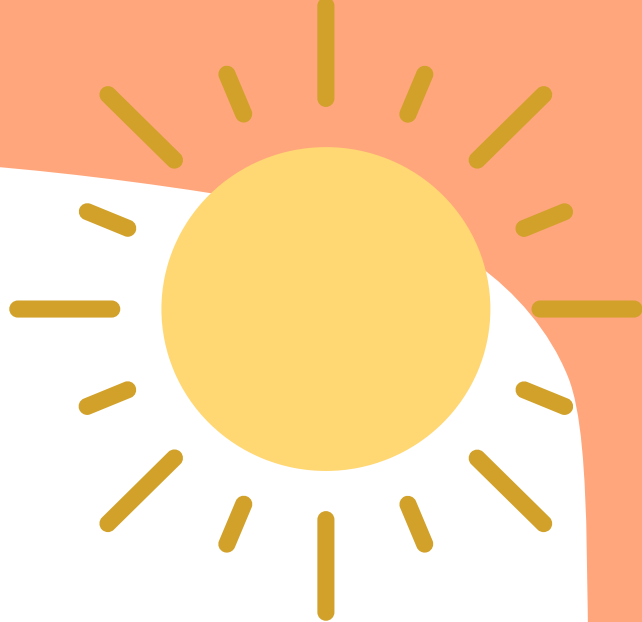
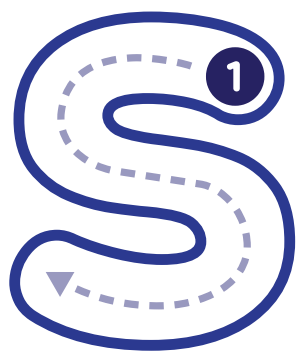


Practise writing.

Rr

Handwriting practice lines consisting of multiple sets of three horizontal lines (top, middle dashed, bottom) for writing practice.

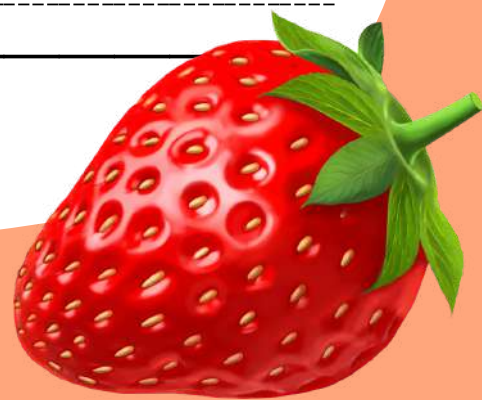
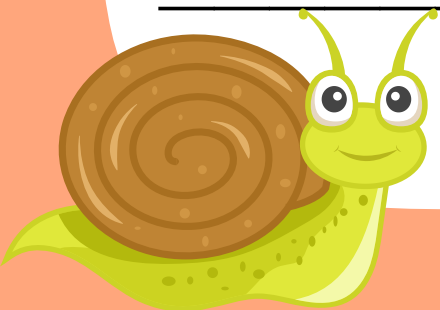


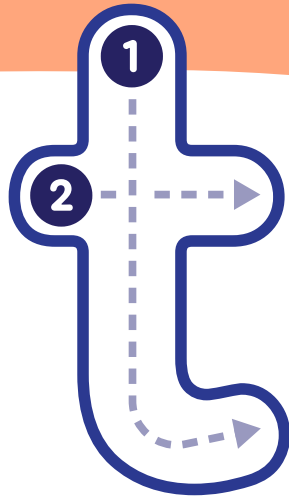
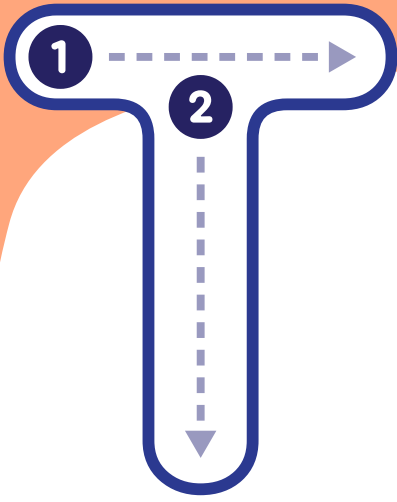


Practise writing.

Ss

Handwriting practice lines consisting of multiple sets of three horizontal lines (top, middle dashed, bottom) for writing practice.

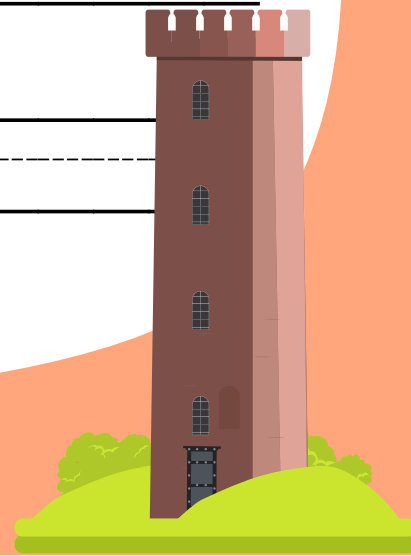


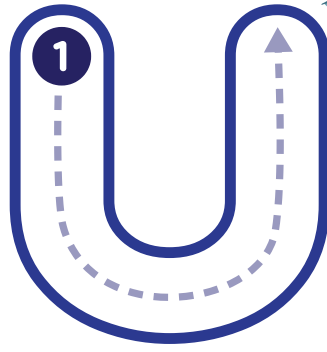
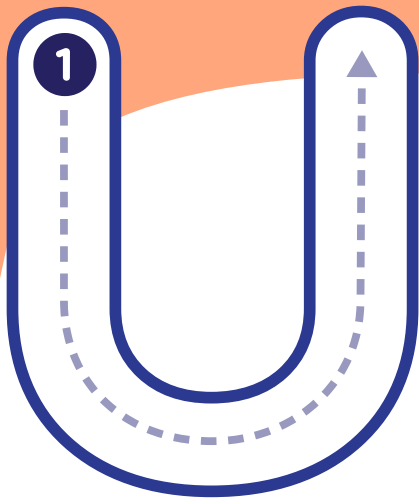


Practise writing.

Ss

Handwriting practice lines consisting of multiple sets of three horizontal lines (top, middle dashed, bottom) for writing practice.



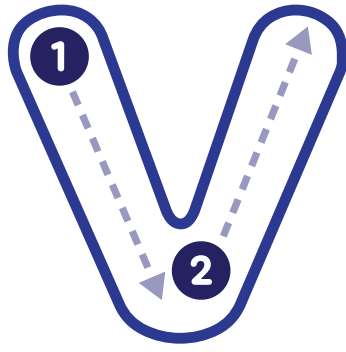
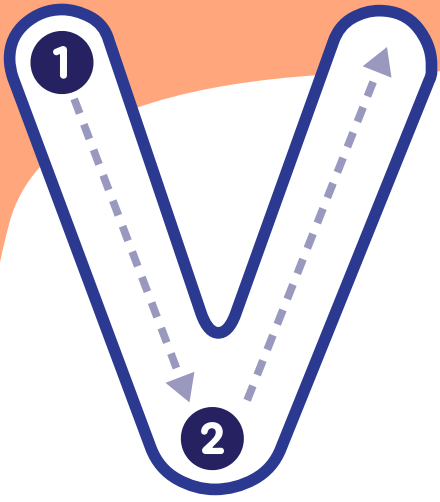


Practise writing.

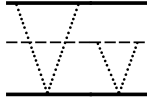
Uu

Handwriting practice lines consisting of multiple sets of three horizontal lines (top, middle dashed, bottom) for practicing the letter Uu.



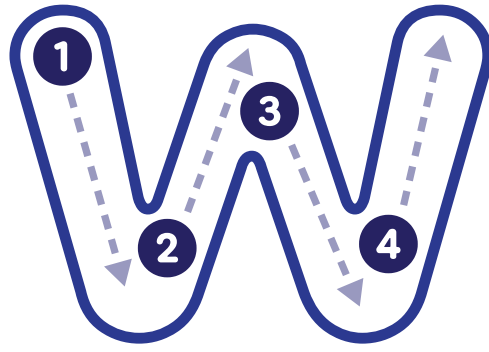
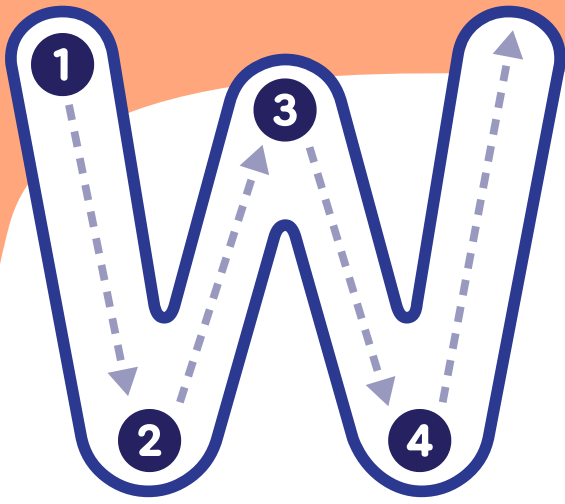


Practise writing.

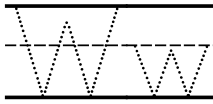


Handwriting practice lines consisting of multiple sets of three horizontal lines (top, middle dashed, bottom) for writing practice.

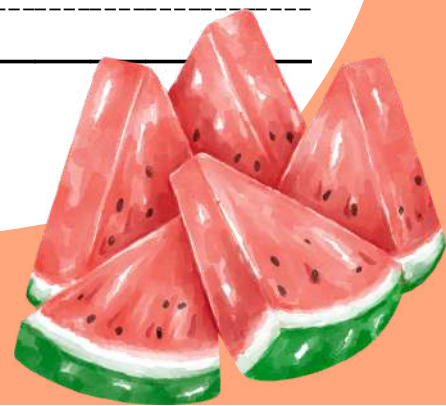


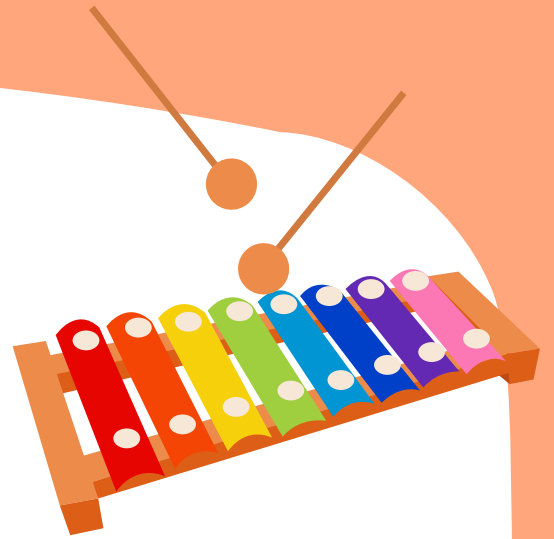
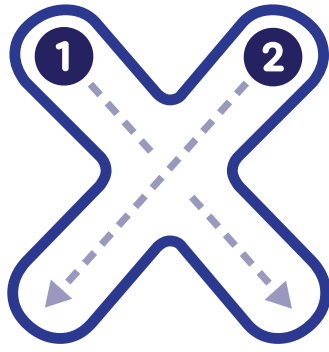
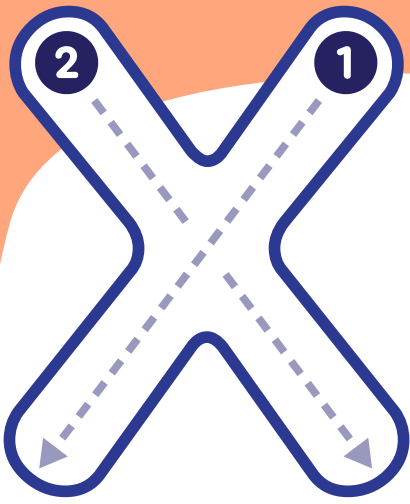


Practise writing.

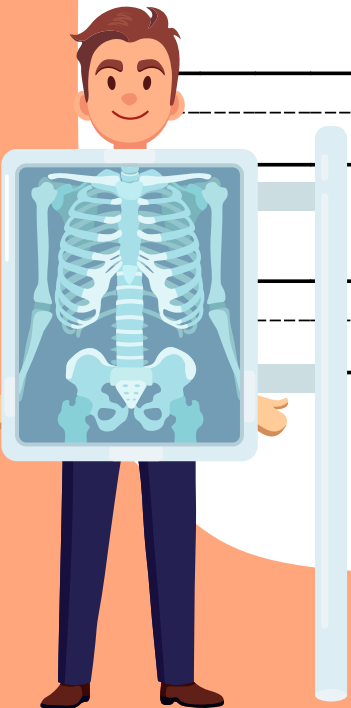
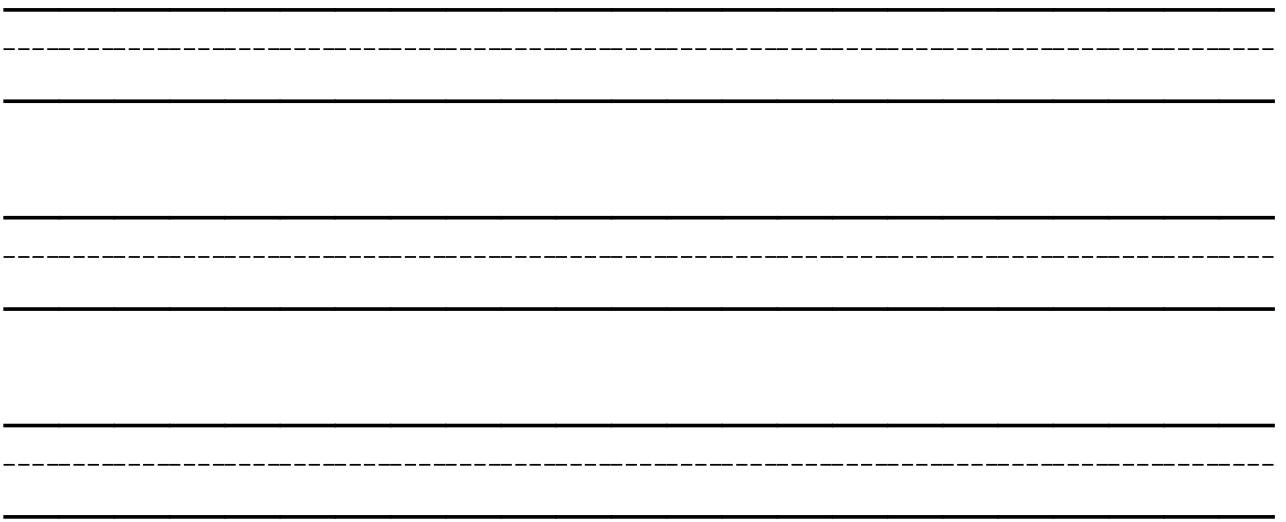
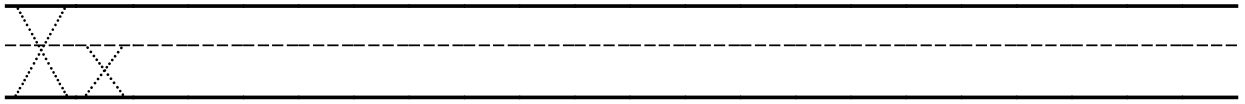


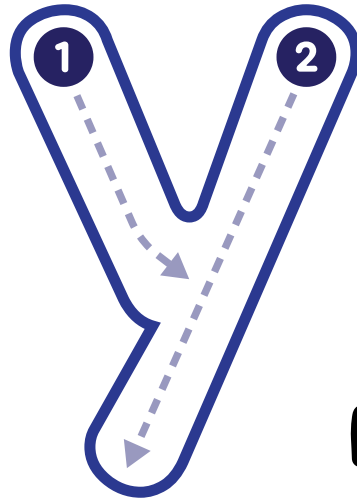
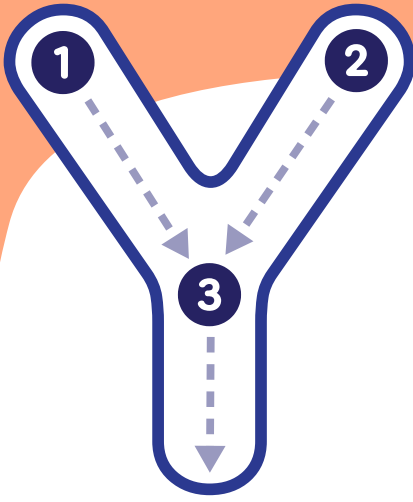
Handwriting practice lines consisting of solid top and bottom lines with a dashed middle line. There are seven sets of these lines, with the first set containing the dotted letters 'Ww'.



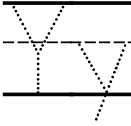


Practise writing.

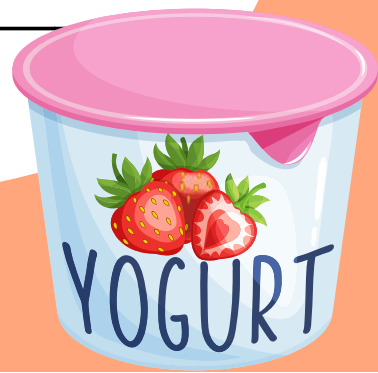


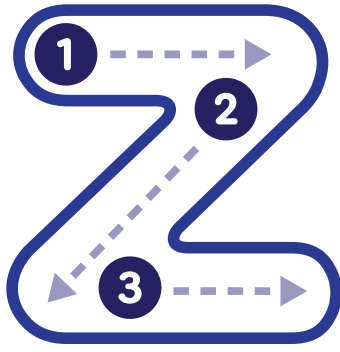
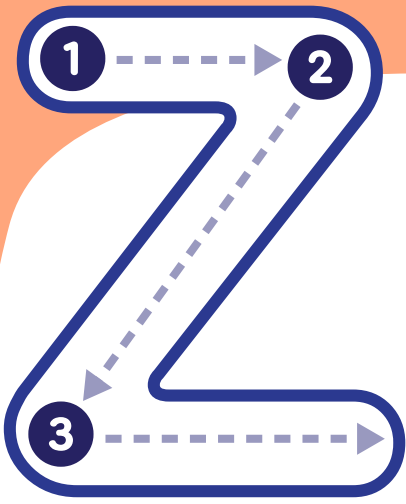


Practise writing.



Handwriting practice lines consisting of multiple sets of three horizontal lines (top, middle-dashed, bottom) for writing practice.





Practise writing.

Handwriting practice lines consisting of a solid top line, a dashed middle line, and a solid bottom line. The first line contains a dotted uppercase 'Z' for tracing. There are seven more sets of empty lines for independent practice.

